

Conclusion

La gangrène du périnée est une affection grave avec un taux élevé de morbidité et de mortalité. Dans cette observation, l'âge avancé, le cancer, la cirrhose et le diabète semblent être des facteurs ayant aggravé le pronostic. Bien que le cancer colorectal a déjà été retenu comme la cause de la gangrène Fournier, cette étiologie reste extrêmement rare.

Références

1. Cakmac A, Genc V, Akyol C, Kayaoglu HA. Fourniers gangrene: is it scrotal gangrene. *Advanced Therapeutics*. 2008;25:1065–74.
2. Basoglu M, Ozbey I, Atamanalp SS, et al. Management of Fourniers gangrene: review of 45 cases. *Surg today*. 2007;37:558–63.
3. Gould SW, Banwell P, Glazer G. Perforated colonic carcinoma presenting as epididymo-orchitis and Fourniers gangrene. *Eur J Surg Oncol*. 1997;23:367–8.
4. Morpurgo E, Galandiuk S. Fourniers gangrene. *Surg Clin North Am*. 2002;82:1213–24.
5. Moslemi MK, Sadighi Gilani MA, Moslemi AA, Arabshahi A. Fournier gangrene presenting in a patient with undiagnosed rectal adenocarcinoma: a case report. *Cases J*. 2009 Dec 3;2:9136.
6. Sanchez Mazzaferri F, Fadil Iturralde JL, Provenzal O. Fourniers gangrene. Our experience over 10 years. A review of the literature. *Arch Esp Urol*. 1999;52:721–7.
7. Zaba R, Grzybowski A, Prokop J, Zaba Z. Fourniers gangrene: historical survey, current status, and case description. *Med Sci Monit*. 2009;15:34–9.

Amin Makni, Meriam Serghini**, Mohamed Jouini*, Montassar Kacem*, Zoubeir Ben Safta**

**Université Tunis El Manar, Faculté de Médecine de Tunis, Hôpital La Rabta, Service de Chirurgie générale "A", 1007, Tunis, Tunisie*

***Université Tunis El Manar, Faculté de Médecine de Tunis, Hôpital La Rabta, Service de Gastroentérologie, 1007, Tunis, Tunisie*

Systemic lupus erythematosus and Hodgkin disease

Systemic lupus erythematosus (SLE) was associated with lymphoproliferative diseases such as Hodgkin's lymphoma (1). Since there is considerable overlap between the features of SLE and Hodgkin's lymphoma (HL) there can be a great difficulty in diagnosing HL in the presence of SLE.

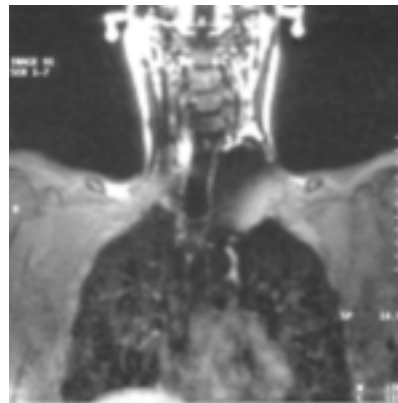
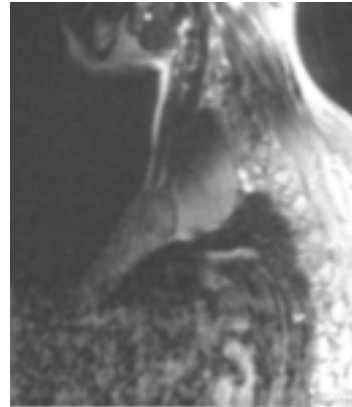
We report a rare case of association of Hodgkin's disease with SLE.

Case report

A 35-year-old woman was followed since 2002 for SLE with neuropsychiatric, renal and hematologic involvements. She was treated with glucocorticoid only with favorable evolution. In April 2006, when she was under steroid treatment of 10 mg/day, she was admitted for cervical mass and weight loss. Physical exam showed a left indolent, fixed and elastic cervical adenopathy. Biology was normal. Computerized tomography of the chest and abdomen showed a left basicervical mass expanded to the anterior and superior mediastinum. The resonance magnetic imaging was suggestive of a thymoma (figures 1, 2). The cervicotomy showed a supraclavicular mass. Histological and subsequent clonality studies confirmed

classical Hodgkin's lymphoma (HL) of the nodular sclerosing type. Viral Serology (Epstein-Barr, herpes simplex, herpes zoster) was negative. The diagnosis of Hodgkin's disease stage Ia was restrained and the patient was transferred to hematological department where she was treated by ABVD with favorable evolution. She is currently followed in our department and is in remission of her lupus and his Hodgkin's disease.

Figures 1, 2: IRM suggestive of a thymoma



Conclusion

SLE has been associated with increased frequency of neoplasia, lymphoma, leukaemia and epithelial tumours. Hodgkin's disease has been occasionally associated with SLE in adults. The awareness of the association of Hodgkin's disease with SLE and the modes of presentation will help in the early diagnosis and clinical management of such patients.

References

1. Bhalla R, Ajmani HS, Kim WW, Swedler WI, Lazarevic MB, Skosey JL. Systemic lupus erythematosus and hodgkin's lymphoma. *J Rheumatol*. 1993;20:1316-1320.

Besma Ben Dhaou, Fatma Boussema, Zohra Aydi, Fatma Daoud, Lilia Baili, Lilia Rokhani

Tunis El Manar University, Faculty of Medicine of Tunis, Habib Thameur Hospital, Internal medicine department, 1008, Tunis, Tunisia